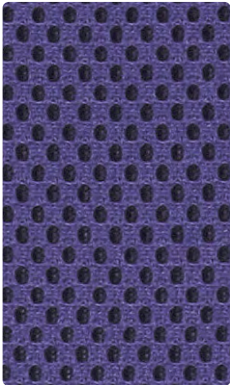


301-034 Caribbean



301-006 Black



301-024 Sapphire



301-019 Marigold



301-013 Limelight



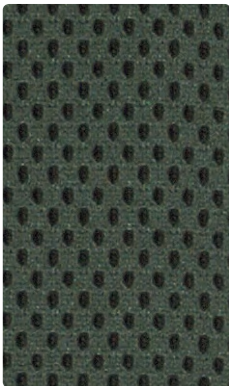
301-026 Sterling



301-014 Sky



301-009 Cayenne



301-003 Hunter



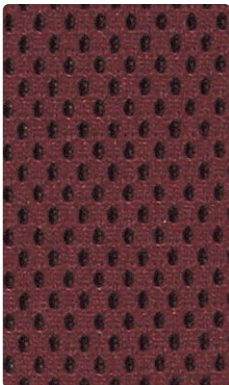
301-000 Mocha



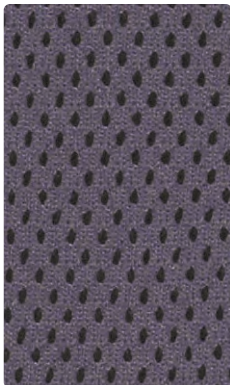
301-004 Ink



301-011 Paprika



301-001 Wine



301-016 Pewter

Application
Seating, Acoustic

Content
100% Polyester

Width
54 inches

Finish
None







Reduced Environmental Impact





TECHNICAL INFORMATION

Content: 100% Polyester	Backing: None	Visual Repeat: Non-Matching
Width: 54"	Finish: None	Directional: Yes
Weight: 16 oz./linear yard	Cleanability: WS	Railroaded: No

PERFORMANCE (*ACT* Registered Certification Marks)	Test Method	Results
Surface Abrasion: Heavy Duty 	ASTM-D-3597/4157 (Cotton Duck)	Exceeds 1,002,000 Double Rubs
Breaking Strength: 	ASTM-D-3597/5034 (Grab Test)	Warp 129 lbs / Fill 78 lbs
Seam Slippage: 	ASTM-D-3597	Warp 27.4 lbs / Fill 32.7 lbs
Pilling Resistance: 	ASTM-D-3512	Class 5
Colorfastness to Crocking: 	AATCC-8	Dry: Class 4 min / Wet: Class 4 min
Colorfastness to Light: 	AATCC-16H	Class 4.5 at 40 Hours

Class in the colorfastness requirements is based on a numerical scale of 5 for negligible or no color transfer to 1 for very severe color change or color transfer.

FLAMMABILITY 

California Technical Bulletin 117, Section E	Passes
NFPA 260 (Equivalent to UFAC) Class 1	Passes
ASTM E84 (Unadhered) Class 1 or A	Passes
FMVSS 302	Passes

May comply with California Technical Bulletin 133 when combined with appropriate components.

REDUCED ENVIRONMENTAL IMPACT

 **GREENGUARD** Indoor Air Quality Certified. **GREENGUARD** Indoor Air Quality Certification requires products to meet some of the world's toughest chemical emissions standards. **GREENGUARD** Children & Schools Certification requires those products to meet or exceed additional criteria, including CA Section 01350, to account for the unique health sensitivities of children.

CLEANING INFORMATION

WS: Water/Solvent Cleaner – Spot clean, with a mild solvent, an upholstery shampoo, or the foam from a mild detergent. When using a solvent or dry cleaning product, follow instructions carefully and clean only in a well-ventilated room. Avoid any product that contains carbon tetrachloride or other toxic materials. With either method, pretest a small area before proceeding.

ADDITIONAL INFORMATION

Custom Capabilities: All patterns can be custom colored. Minimum yardage applies.
Memo Samples: Please keep this card intact. Individual memo samples can be ordered on our website or by contacting customer service.
Color Matching: Mayer Fabrics always attempts to ship a satisfactory commercial match. Because of industry standard dye lot variation, colors may not match exactly.
Specifications: Specifications are correct at the time of printing. Current specifications are available on our website.
For information or assistance with products or services, call us at 800.428.4415 or refer to our website, www.mayerfabrics.com.



GSA Contract # GS-28F-0022P