



BACK TO CLASSIC

---

## MADRAS

Top Grain buffed (corrected) leather, reducing heavy natural scarring & blemishes, concealing some natural markings.

This leather is embossed with grain pattern to ensure uniformity of colour & resistance to fading, creating a highly uniform and consistent texture.

Excellent durability with minimal maintenance. This top coated leather is very durable and will provide excellent wear characteristics for high traffic areas, if maintained properly.

Perfect to use in combination with our VINYL match program.

Content	Top Grain, Embossed (Madras)
Finish	Solid, Pigmented
Raw Material	South American
Average Hide Size	50 FT2

[ADD TO SAMPLE REQUEST](#)

---

[AVAILABLE COLOURS](#)

---



Sample



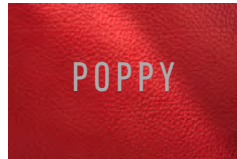
Sample



Sample



Sample



Sample



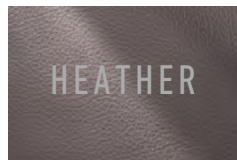
Sample



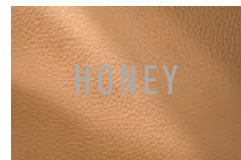
Sample



Sample



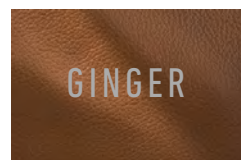
Sample



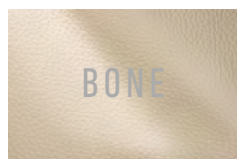
Sample



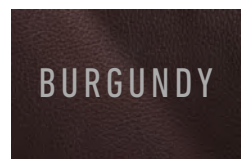
Sample



Sample



Sample



Sample



Sample



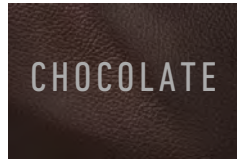
Sample



Sample



Sample



Sample



Sample



Sample

Property	Test Method	Result
Average Thickness	ISO 2589	0.8 - 1.0 mm
Tensile Strength	ISO 3376	min.10 N/mm <sup>2</sup>
Elongation at Break	ISO 3376	min 35%
Tear Strength	ISO 3377-2	min 40 N
Flexing Endurance (20,000 cycles)	ISO 5402	20,000
Colour Fastness to Artificial Light	ISO 105 B 02	min. 4 (Blue Scale)
Colour Fastness to Rubbing (500 Dry Rubs, 100 Wet Rubs)	ISO 11640 , ISO 11640	4 (Grey Scale), 4 (Grey Scale)
Finishing Adhesion	ISO 11644	min 3 N/cm
Determination of pH	ISO 4045	min. 3,2
Ignitability BS 5852-0 (Cigarette)	BS 5852:1979	Pass
Ignitability BS 5852-1 (Match)	BS EN 1021-1-2:2006	Pass
California Technical	Cal Tech Bulletin 117-2013	Pass
Cigarette Ignition Resistance	UFAC/NFPA 260	Class 1
Boston Fire Dept	BFD IX-I	Pass
Wyzenbeek - (Oscillatory Cylinder Method) @ 70,000 cycles	ASTM D 4157.07	Pass